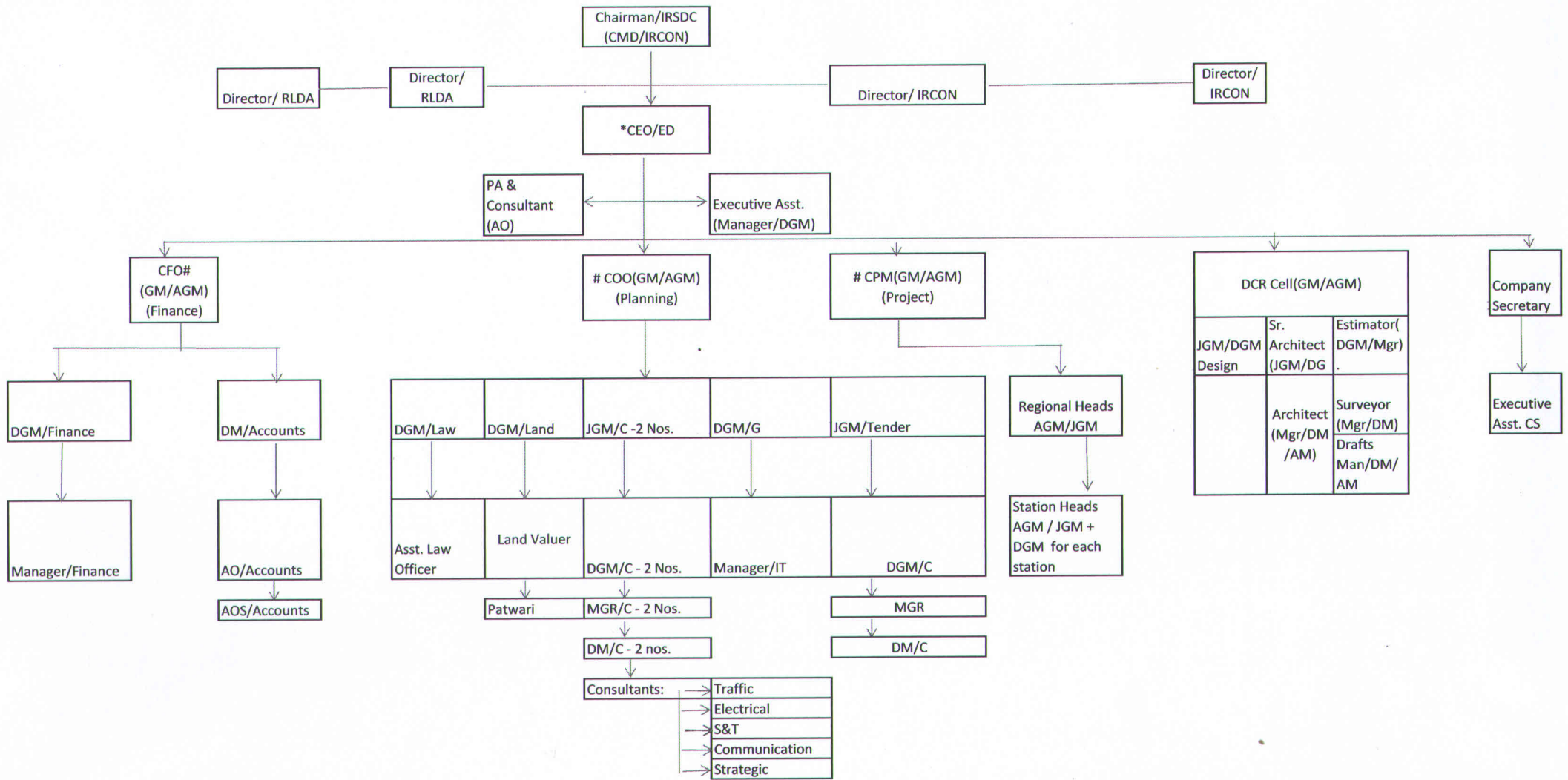


REVISED ORGANISATION CHART OF IRSDC (FOR THE YEAR 2016-17)



- Note:
1. Supporting officials at each station
 2. Officers to be supported suitably by Technical Supervisors from each field like Civil, Commercial, Traffic, Electrical, S&T (Signaling & Telcom), Mech & Office staff to be sourced from Railway, RLDA, IRCON, Other PSU/Govt Depts. Or retired Officials.
 3. P.A. For DGM/JGM and above
- * , # BoD may approve sending a formal proposal to Ministry of Railway for converting the posts of CFO, COO, CPM (Project), to full time Functional Director and post of CEO to Managing Director.